

4x4

ACE F150

Nextgen Hydraulic Crane Capacity : 15 tonnes

Rough terrain and rugged, 4x4 articulated NextGen pick 'n' move crane

ACE INDIA'S NO. 1
CRANE BRAND



- CEV Stage IV Engine
- Better creep speed
- Improved kinematics with low Center of Gravity
- Slotted boom
- Self Adjusting hook block
- Fail safe air brakes

Specifications

F 150

LIFTING CAPACITY	15 Tonnes
ENGINE	Volvo Eicher (CEV Stage IV) Diesel Engine Model E483 CRDi, 4 cylinder, Water Cooled, Turbo Charged Engine with Electronic Control Unit (ECU)
Max. Rating	74 HP (55kW) at 2200 RPM
TRANSMISSION	Heavy Duty Synchromesh with 10 Forward and 2 reverse speeds. Auxilliary Gear Box with Hi/Low & 2WD/4WD selector.
Axles	Front axle is rigidly mounted on the chassis and Rear axle is mounted with 2 Nos. leaf Springs.
Drive	2 / 4 Wheel drive.
Clutch	Heavy Duty, single, dry friction type hydraulic clutch.
Top Speed	40 Kmph on even metaled Road (without load)
Creep Speed	1.3 Kmph
Gradeability	40 % (unladen)
BRAKES	Pneumatically operated dual circuit brakes on Front and Rear wheels. Parking brake is pneumatically operated spring actuated fail safe type.
STEERING	Hydraulically operated steering wheel with 40° Articulation on either side and turning radius of 7.5 Mtrs (approx) on outer rear wheels.
TELESCOPIC BOOM	4 part slotted boom, 2 part hydraulically operated & synchronized and 4th part power extended (15.5 mtrs height)
BOOM LUFFING Range	- 7° to + 70°
HYDRAULIC SYSTEM	<ul style="list-style-type: none"> • Gear / Infra Vane type Main Pump. Five spools control valve with built in Relief Valve. • Suction line has 100 mesh size Strainer while return line is fitted with 25 micron filter. • Two double acting lift cylinders, one double acting extension cylinder and two double acting steering cylinders.
HOIST	Winch is driven by hydraulic motor and fitted with rope tensioner. Hoisting is provided through self adjusting hook block employing 4/6 falls of 13 mm dia rope
Hoist Speed	50 Mtr/Min (Line Speed)

ELECTRICAL SYSTEM	12v, Negative Earth (100 AH Battery)
TYRES	11.00 x 20 - 16 PR (8 Nos.)
Wheel Base	3800 mm
Wheel Track	1825 mm
SAFETY	<ul style="list-style-type: none"> • Hose Failure Protection • Audio Over hoisting Indication • Safety Brakes on Hoist • Self-Adjusting Hook Block • Front and rear wheel guards
STANDARD EQUIPMENT	<ul style="list-style-type: none"> • ROPS fully enclosed wide view cabin • Front work lights • Reflectors and rear view mirror • Tool kit • Cabin fan • Wiper motor • Instrument Cluster :- <ol style="list-style-type: none"> a) Fuel level gauge b) Air pressure gauge c) Oil pressure gauge d) Coolant temp e) Engine RPM f) Speedometer g) Odo meter h) Engine Hour Recorder i) Fault Detector Codes (P-Codes) • Rear view camera • Front Outriggers • Beacon Rotating Light
OPTIONAL EQUIPMENT	<ul style="list-style-type: none"> • Volvo Eicher 101 HP Engine. • Tata 49 HP Engine • Fly jib (1.25 Tonnes Max. Capacity) • Safe load indicator/ LMI • Over Hoist hydraulic cutoff • Fire extinguisher • Cabin Front Glass Protector • Helper / Slinger Seat • Drag Winch • Spark arrestor • 4 part slotted boom (18.9 mtrs. height) • Front & Side Proximity Sensors • Man Basket Attachment • Fork Attachment • Ram Attachment
OPERATING WEIGHT	15525 Kgs.

ACE

F150

100%
Swadeshi



OUTRIGGERS

Front Outriggers for added safety during high lift operations.



ROPS CABIN

Front mounted, ergonomically designed Cabin for better visibility and driveability.



INCREASED VISIBILITY

Bigger size front windscreen and re-routing of hoses provide much better front visibility.



ENGINE

Volvo Eicher (CEV Stage IV)
CRDi Diesel Engine Model E483
with nation wide service support and
spares availability



ELECTRONIC CLUSTER

Digital Electronic Cluster with
advanced features.



OPTIMIZED KINEMATICS AND LOW C.G.

F 150 crane has been designed
for operational safety with low
Center of Gravity (C.G.) providing
best in class stability



STEERING WHEEL & CONTROLS

Ergonomically placed operator
console and instrument cluster
ensures ease of operation.



ECU

Electronic control unit
for better fuel economy and
diagnostic trouble shooting

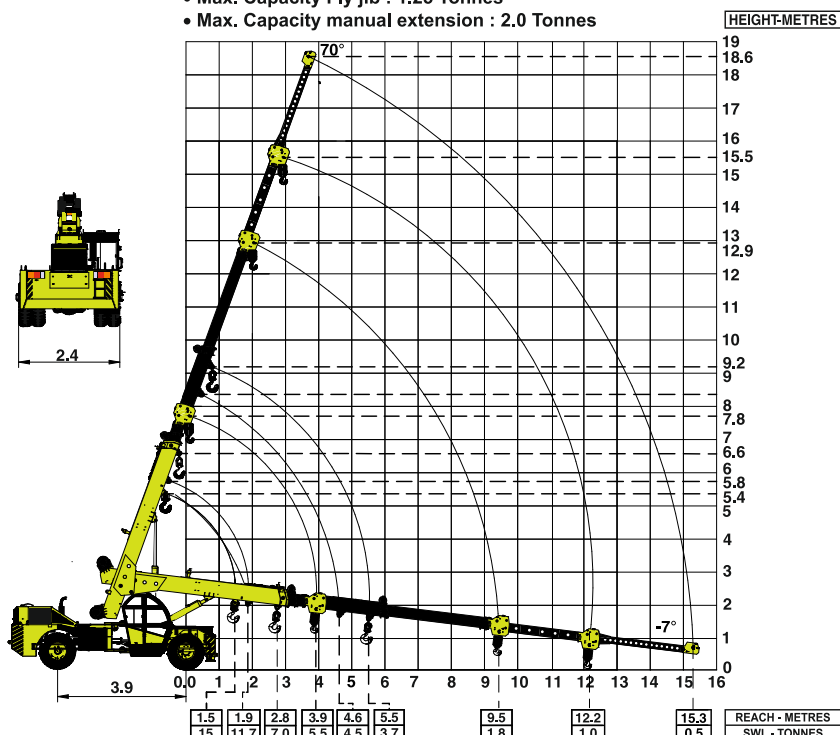


ATS

After treatment
system for Emission Control
in 101 HP Variant

F150 Crane with 4 part boom + Flyjib

- Max. Capacity Fly jib : 1.25 Tonnes
- Max. Capacity manual extension : 2.0 Tonnes

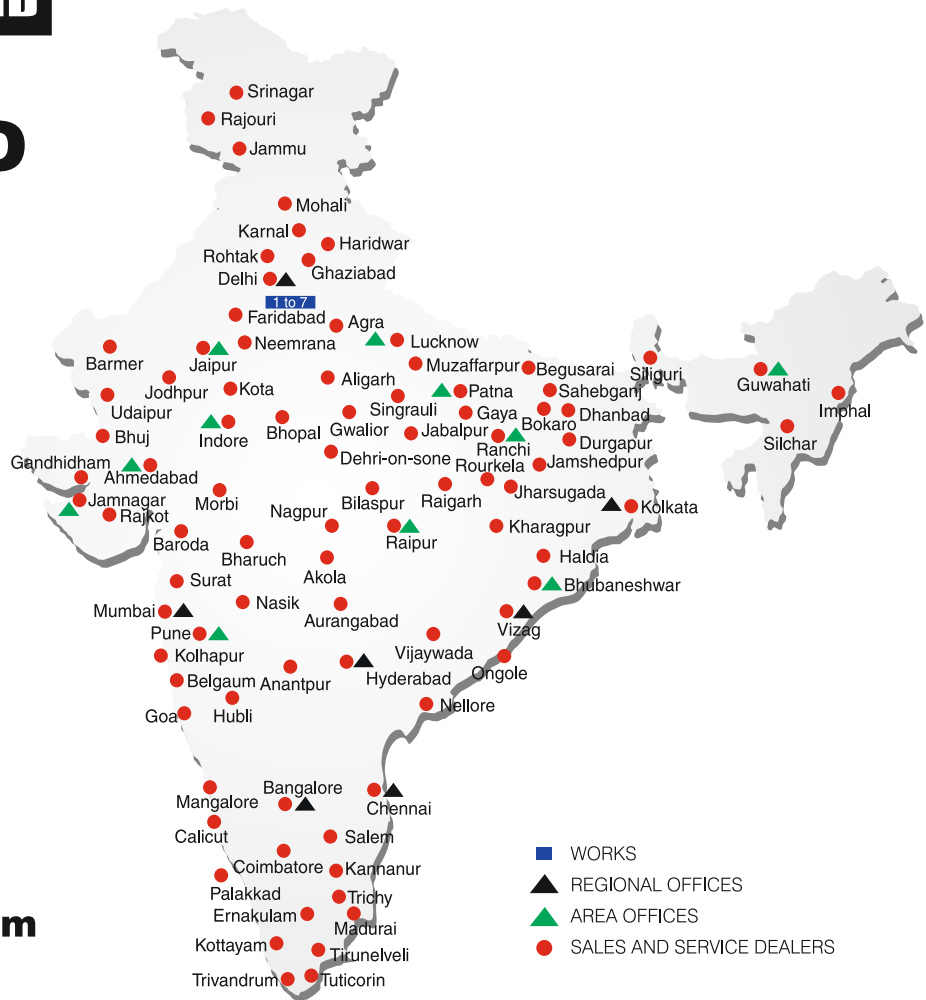


BUILT TO PERFORM



**RELIABLE AND
DEPENDABLE
EFFICIENCY**

NETWORK



**Toll Free Help Line
1800 1800 004**

www.ace-cranes.com

MARKETING H.Q.

4th Floor, Pinnacle
Surajkund, NCR-121009
Ph. : +91-129-4550000
Fax : +91-129-4550022
E-mail: marketing@ace-cranes.com

REGISTERED OFFICE

Dudhola Link Road, Dudhola
Palwal-121102, Haryana
Ph.: +91-1275-280111
Fax: +91-1275-280133
CIN : L74899HR1995PLC053860

MUMBAI OFFICE

31, "Kalpataru Court"
Chembur, Mumbai - 400074
Ph.: +91-22-25206846, 25207070
Fax: +91-22-25207071
E-mail: acemumbai@ace-cranes.com

KOLKATA OFFICE

"Forma Towers" 84-A, Second Floor
AJC Bose Road, Kolkata - 700014
Ph.: +91-9038070630
E-mail: acekolkata@ace-cranes.com

CHENNAI OFFICE

1st Floor, "Alsa Regency", 165
Eldams Road, Alwar Pet
Chennai - 600018
Ph.: +91-44-24314253
Fax: +91-44-24314252
E-mail: acechennai@ace-cranes.com

HERE TO SERVE YOU.

SPARE PARTS & SERVICE

ACE has all India Sales and Service network operating out of all the major cities. These outlets are fully equipped to provide genuine spare parts and services by company trained engineers. These outlets are further supported by company officials based at Delhi, Mumbai, Chennai, Kolkatta, Ahmedabad, Surat, Pune, Jaipur, Chandigarh, Ranchi, Raipur, Indore, Bhubneshwar, Lucknow, Jamnagar, Hyderabad, Bangalore, Guwahati, Patna, Vizag & Kochi.



Action Construction Equipment Ltd.

Contact:

ACE reserves the right to alter any specifications without prior notice. Dimensions, weights & capacities mentioned herein are variable by $\pm 5\%$. Accessories if shown are not part of the Standard Equipment.

